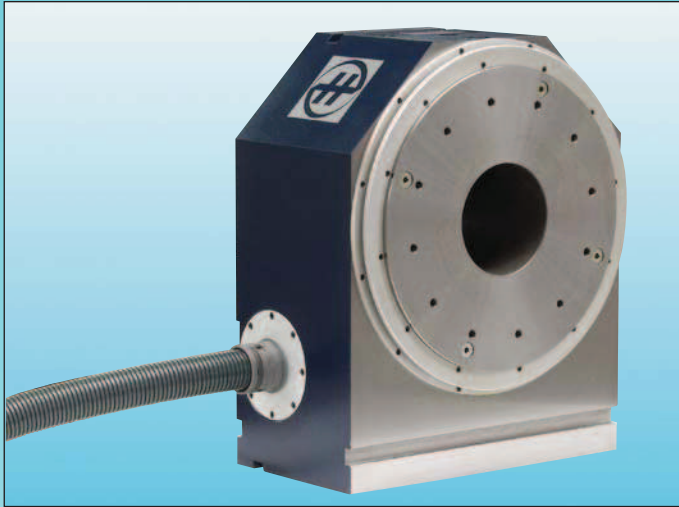


Direct Drive Unit HD



Dividing units HD with torque motor as direct drive. The torque motor is directly connected with the indexing spindle. Thus it is possible to keep high rotation speeds of the indexing spindle during an unlimited period of time. Dividing units HD are designed for horizontal or vertical use. Center heights of 200, 250 and 350 mm are available. The spring loaded clamping system of the indexing spindle allows high machining forces. The indexing spindle with centering and tapped holes is designed for easy fixture mounting.

The dividing unit HD will be interfaced into machine controller as 4th axis.

Dividing Unit RW/NC

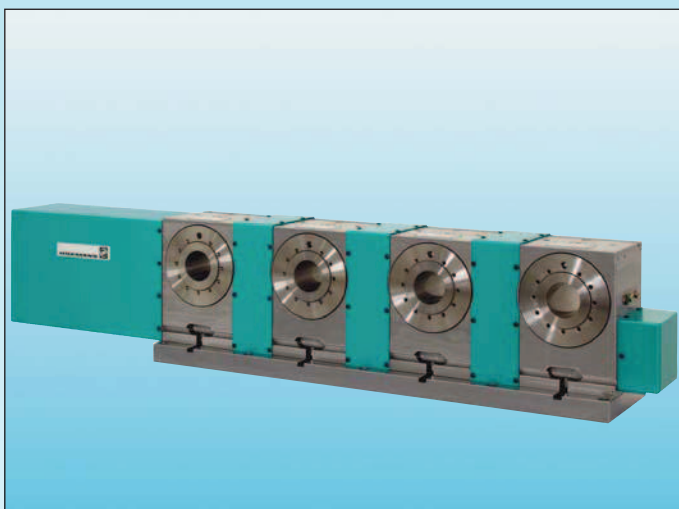


Dividing units RW/NC with worm gearing drive. They are designed for horizontal or vertical use and are available with center heights of 75, 100, 125, 160, 220, 300, 380 and 450 mm. For higher indexing accuracy requirements they can be equipped with direct feedback systems. The integrated hydraulic clamping system of the indexing spindle allows high machining forces. The indexing spindle with centering, tapped holes and a cylindrical through bore is designed for easy fixture mounting. Various spindle designs with ISO taper, BT taper, positive taper lock HSK, Morse taper or with power chucks are available as option.

A dividing unit RW/NC can be interfaced into the machine tool as:

- 4th axis directly interfaced into the machine controller. All suitable types of motors can be mounted.
- Stand-alone positioning axis with a HOFMANN single-axis positioning controller.

Multi-Spindle Dividing Unit RW/NC

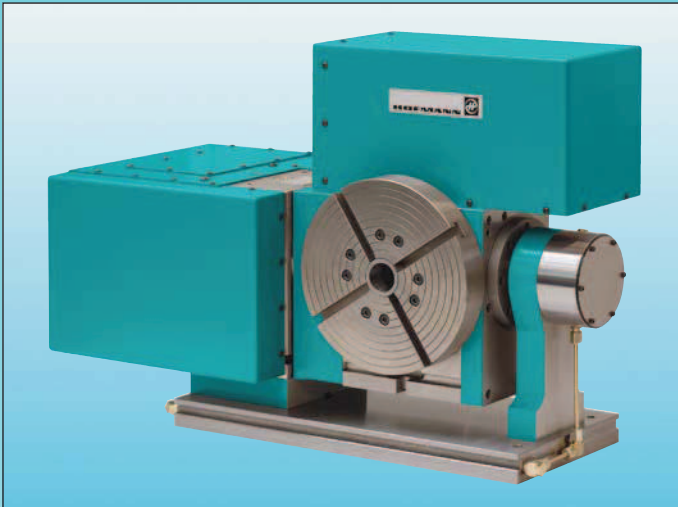


Multi-spindle dividing units RW/NC with 2, 3, 4, and 5 indexing spindles. The indexing spindles center heights and center distances can be chosen according to specific requirements. Depending on the indexing spindle center distance and indexing accuracy requirements the multi-spindle dividing unit is using either a single housing or mounts several interconnected single-axis dividing units on a common base plate.

A multi-spindle dividing unit RW/NC can be interfaced into the machine tool as:

- 4th axis directly interfaced into the machine controller. All suitable types of motors can be mounted.
- Stand-alone positioning axis with a HOFMANN single-axis positioning controller.

Tilting Dividing Unit RS/NC



Tilting dividing units RS/NC use single-axis dividing units RW/NC as rotary axis and as tilting axis. Multi-spindle dividing units RW/NC can optionally be used as rotary axis. The modular construction allows an easy adaptation to special requirements.

Tilting dividing units RS/NC can be interfaced into the machine tool as:

- 4th and 5th axis directly interfaced into the machine controller. All suitable types of motors can be mounted.
- Rotary axis as 4th axis directly interfaced into the machine controller. All suitable types of motors can be mounted.
- Tilting axis as stand-alone axis with a HOFMANN single-axis positioning controller.
- Stand-alone rotary and tilting positioning axis with a HOFMANN dual-axis positioning controller.
- Rotary axis as 4th axis directly interfaced into the machine controller. All suitable types of motors can be mounted.
- Tilting axis as manual axis with hand wheel with micrometer dial.

Tilting Rotary Table HPRS/NC

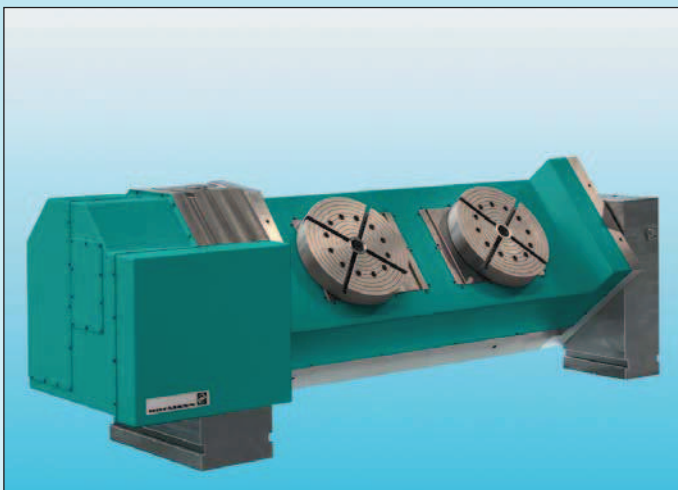


Tilting rotary tables HPRS/NC with table diameters of 250, 320, 400, 500, 630 and 800 mm. The tilting range is limited from 0° to 90°. Rotary and tilting axis can be equipped with a hydraulic axis clamping system for high machining forces.

Tilting rotary tables HPRS/NC can be interfaced into the machine tool as:

- 4th and 5th axis directly interfaced into the machine controller. All suitable types of motors can be mounted.
- Rotary axis as 4th axis directly interfaced into the machine controller. All suitable types of motors can be mounted.
- Tilting axis as stand-alone axis with a HOFMANN single-axis positioning controller.
- Stand-alone rotary and tilting positioning axis with a HOFMANN dual-axis positioning controller.
- Rotary axis as 4th axis directly interfaced into the machine controller. All suitable types of motors can be mounted. Manual tilt axis with hand wheel with micrometer dial.

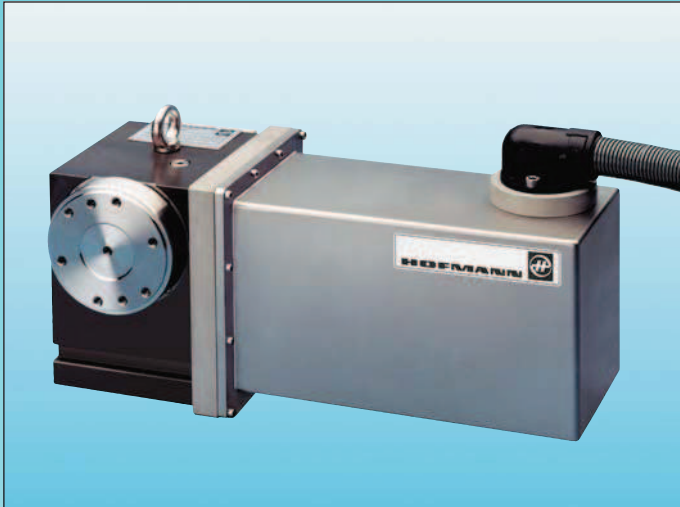
Customized Designs



Customized dividing units and rotary tables are developed in close co-operation with the customers on our CAD systems and are manufactured in our workshop equipped with modern machine tools. Additionally we offer start-up support of our products in customer's factory and training of the staff as well as a fast service by our competent service department.

Our experience gained in more than 50 years in the field of dividing units and rotary tables enables us to solve difficult problems to customer's satisfaction.

EDM Dividing Units EDR

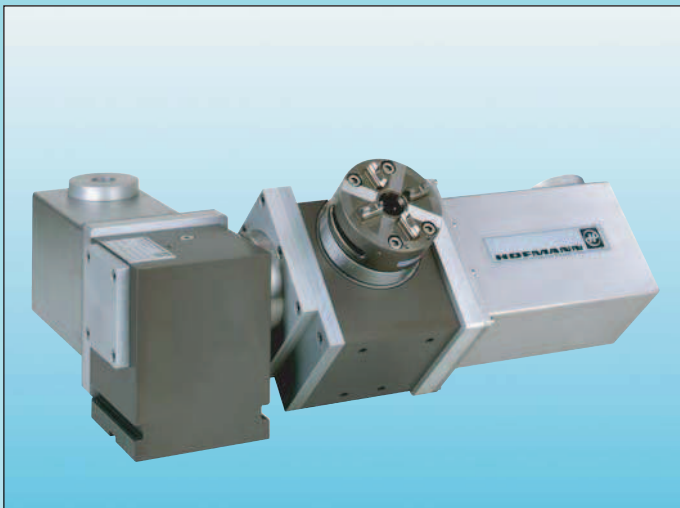


EDM dividing units EDR with centre heights of 125, 160, 220 and 300 mm are specially designed for the use on electric discharge machines in corrosive Dielectric liquids. These dividing units are made of corrosion resistant material and have a degree of protection of IP67 for submerged use. The dividing unit can be interfaced into EDM control as:

The dividing unit EDR can be interfaced into the EDM machine as:

- 4th axis directly interfaced into the EDM machine controller. All suitable types of motors can be mounted.
- Stand-alone positioning axis with a HOFMANN single-axis positioning controller.

Tilting Dividing Unit EDS



EDM tilting dividing units EDS use single axis dividing unit EDR as tilting axis and as rotary axis. They are specially designed for the use on electric discharge machines. These tilting dividing units are made of corrosion resistant material and have a degree of protection of IP67 for submerged use. They are easy to adapt to customer's requirements due to the modular design.

- 4th and 5th axis directly interfaced into the EDM machine controller. All suitable types of motors can be mounted.
- Rotary axis as 4th axis directly interfaced into the EDM machine controller. All suitable types of motors can be mounted.
- Tilting axis as stand-alone axis with a HOFMANN single-axis positioning controller.
Stand-alone rotary and tilting positioning axis with a HOFMANN dual-axis positioning controller.

Tailstock Series RE



Tailstocks series RE available with tailstock sleeves with Morse tapers from MT-1 to MT-6. All center heights from 75 mm up to 500 mm can be supplied.

The tailstock sleeve with Morse taper can be fitted with live centers and dead centers.

There are two different types of tailstocks:

- Tailstock with manual tailstock sleeve operated by a hand wheel and equipped with a manual clamping of the tailstock sleeve.
- Tailstock with hydraulic tailstock sleeves.
- Tailstock with pneumatic tailstock sleeves.

Rotary Table R



Manual rotary tables R available with table plate diameters 250, 320, 400, 500, 630, 800 and 1,000 mm. There are the following designs:

- R** Rotary table with hand wheel and micro-meter dial
- RD** Rotary table with hand wheel and micro-meter dial and additional direct indexing facility
- RI** Rotary table with hand wheel and hole plate fixture
- RDI** Rotary table with hand wheel, hole plate fixture and additional direct indexing facility
- HDR** Rotary table with hand wheel, rotary encoder as indirect feedback system and digital display readout
- HDRM** Rotary table with hand wheel, rotary encoder as indirect feedback system, digital display readout and a gear motor for coarse positioning

Rotary Table WRI



Manual rotary tables WR equipped with an angular housing for horizontal and vertical use with table plate diameters 250, 320, 400, 500 and 630 mm. There are the following designs:

- WR** Rotary table with hand wheel with micro-meter dial
- WRI** Rotary table with hand wheel with micro-meter dial and direct indexing facility
- WRD** Rotary table with hand wheel and hole plate fixture
- WRDI** Rotary table with hand wheel, hole plate fixture and direct indexing facility
- WHDR** Rotary table with hand wheel, rotary encoder as indirect feedback system and digital display readout
- WHDRM** Rotary table with hand wheel, rotary encoder as indirect feedback system, digital display readout and a gear motor for coarse positioning

Tilting Rotary Table HPRS



Manual tilting rotary table HPRS available with table plate diameters of 250, 320, 400, 500, 630, 800 and 1,000 mm, tilting range from 0° to 90°. There are the following designs:

- HPRS/M** Tilting rotary table with hand wheel and micrometer dial
- HPRS/T** Tilting rotary table with hand wheel, rotary axis with hole plate fixture, tilting axis with micrometer dial
- HPRSD** Tilting rotary table with hand wheel, rotary encoders and digital display readouts, Depending on the indexing accuracy requirements direct or indirect feed-back systems are available.

Semi-Universal Dividing Head UTH



Semi-universal dividing head HTH with manual rotary and tilting axis, available with center heights 100, 125, 160 and 200 mm. The rotary axis can be tilted from 0° to 90°.

Rotary axis indexing:

- Indirect indexing with worm gearing, hand wheel and hole plate attachment
- Indirect indexing with worm gearing, hand wheel and micrometer dial
- Direct indexing with worm gearing disengaged and direct indexing plate

Universal Dividing Head UTH

Universal dividing head UTH is based closely on the semi-universal dividing head HTH, with additional bevel gear outlet for differential indexing or spiral milling.

Direct Dividing Head VTS



Direct dividing unit VTS with quick indexing device, available with centre heights of 125, 160 or 200 mm for vertical and horizontal use.

This direct dividing unit can be equipped with three-jaw chucks, four-jaw chucks, collet chucks or table plates.

Quick, economical dividing operation with a standard direct indexing plate with 24 notches for divisions 2, 3, 4, 6, 8, 12 and 24.

Combined with the drilling fixture BV the direct dividing unit VTS is the unit which can replace special drilling fixtures.

Universal Tilting Dividing Unit TSH



Universal tilting dividing unit TSH, designed for light duty milling and engraving work. The rotary axis can be pivoted from 0° to 90°.

Rotary axis indexing:

- Indirect indexing with worm gearing and hand wheel with micrometer dial
- Direct indexing with a spring locked pin and 60 direct indexing positions
- Direct indexing with a worm gearing disengaged, direct turning of indexing spindle and graduation scale on indexing spindle rim

Precision Balancing Stands ABL



Balancing stands ABL designed for static balancing of disc shaped rotors like grinding wheels, fly wheels, fans or propellers. They are also used for static prebalancing or for checking the true running.

Precision balancing stands ABL are available with a maximum weight capacity of 3, 10, 50, 100, 200 and 400 kg.

Precision balancing stands ABL are delivered in pairs with or without a base plate. Base plates are available with a length of 700, 1,000 or 1,400 mm.

Precision Balancing Stands ABS



Balancing stands ABS designed for static balancing of heavy rotors up to a maximum weight of 50.000 kg. The single balancing stands are mounted on a swivelling base for adjusting to slight arbor diameter differences and for an even load distribution on the hardened and ground rollers.

Precision balancing stands ABS are available with a maximum weight capacity of 800, 2,000, 5,000, 10,000, 25,000 and 50,000 kg.

Precision balancing stands ABS are delivered in pairs.

Dividing Units RWD / RSD



Dividing units RWD or tilting dividing units RSD are customized designs of dividing units RW/NC or tilting dividing units RS/NC for the use on measuring devices. They can be operated manually or alternatively driven by frequency controlled gear motors.

For high positioning accuracy angle encoders are used for direct position feedback.

For standard positioning accuracy rotary encoders are used for indirect position feedback.

The angular values of the spindle position are displayed on a separate Digital Display Unit.