

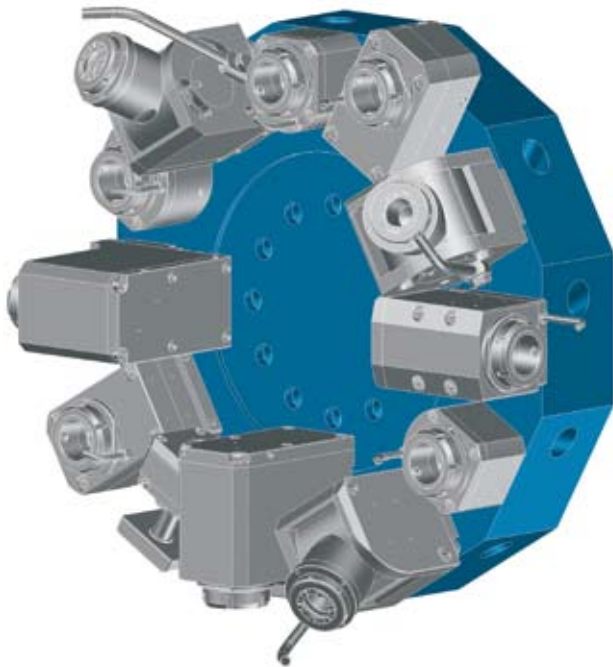
# LOKUMA LB 400 - M / LU 400 - M (Upper Turret)

## Data

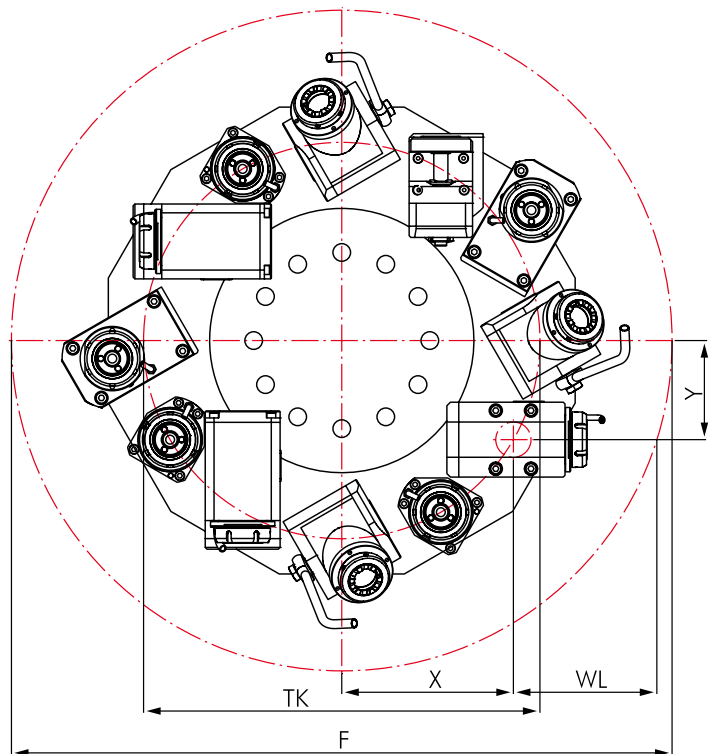
| Machine type Series |          | Turret Stations |
|---------------------|----------|-----------------|
| <b>LB 400</b>       | <b>M</b> | 12              |
| <b>LU 400</b>       | <b>M</b> | 12              |



## Disc-type Turret VDI 40





## Interference Circles



| Machine type Series | F   | TK  | X   | Y  | WL  |
|---------------------|-----|-----|-----|----|-----|
| <b>LB/LU400</b>     | 736 | 446 | 215 | 60 | 148 |

# LOKUMA LB 400 - M / LU 400 - M (Upper Turret)

## Driven Toolholders

|                      | Page |   | Page |
|----------------------|------|---|------|
| <b>Straight Unit</b> |      |    | 176  |
| <b>Angle Unit</b>    |      |  | 177  |

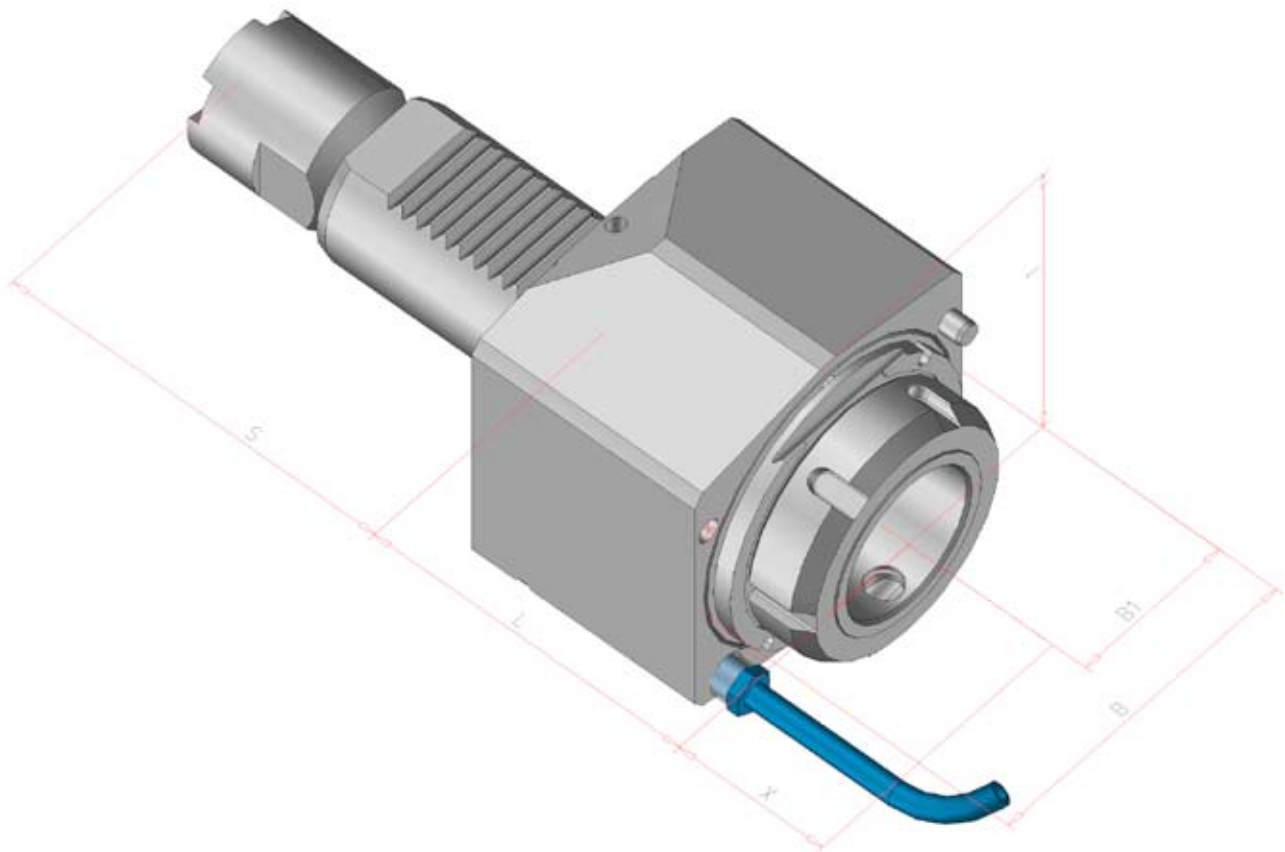
## Options and Accessories

|                                 |   |  |                                 |
|---------------------------------|---|--|---------------------------------|
| <b>mi Toolholders</b>           |  | mi System Description<br>Toolholders<br>Accessories  | 275<br>278-283<br>283-284       |
| <b>Standard VDI Toolholders</b> |  | VDI Toolholders<br>Accessories   | 301-308<br>309-310              |
| <b>Accessories</b>              |  | Collets DIN 6499<br>Threading Collets<br>Wrenches<br>Clamping Nuts<br>Sleeves and Bushings | 309<br>309<br>309<br>309<br>310 |



## Straight Unit

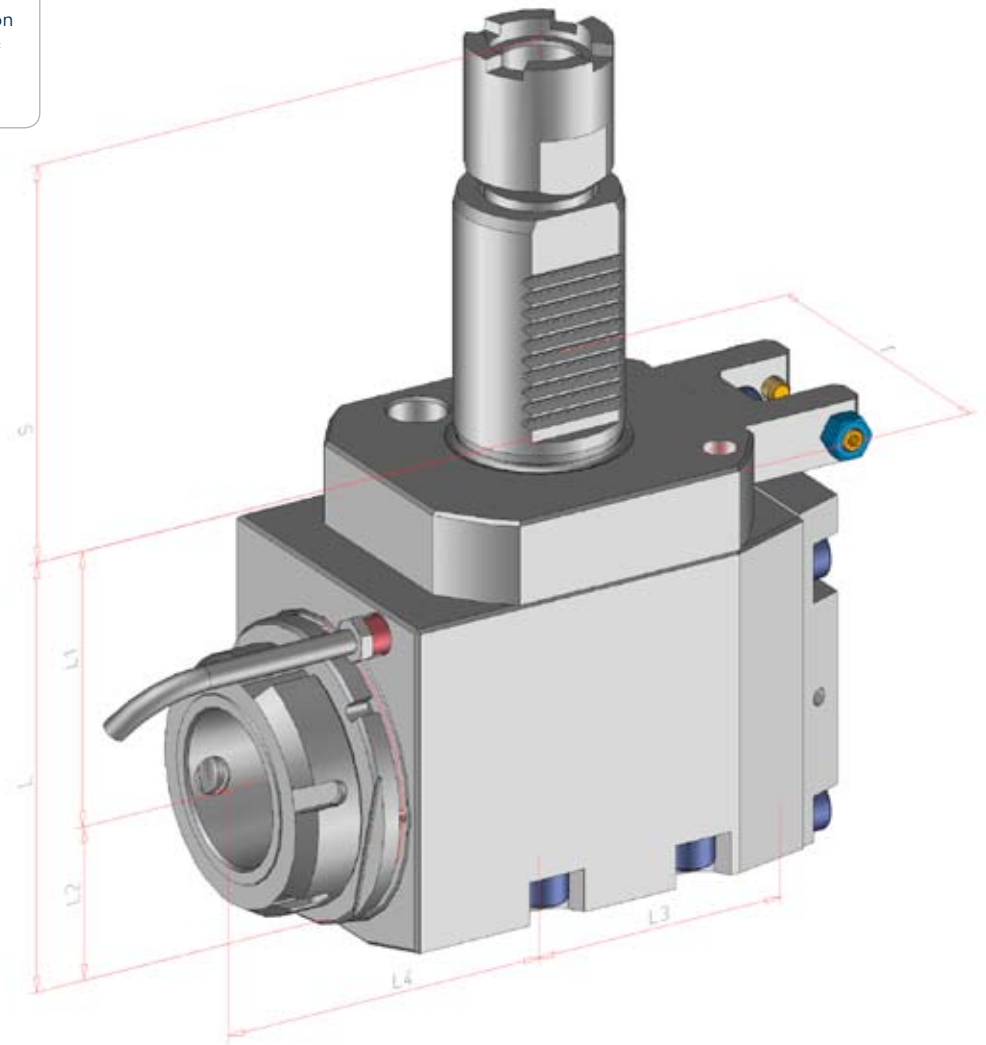
|  |                             |
|--|-----------------------------|
| for Manufacturer   |                             |
| <b>LOKUMA</b>  |                             |
| for Machine type   |                             |
| <b>LB 400-M</b><br><b>LU 400-M (Only for Upper Turret)</b> |                             |
| Dimensions   |                             |
| Revolver type  | Disc-type Turret            |
| Shank  | VDI 40                      |
| Drive  | Layer gear;<br>single level |
| Graduation   | 30 / 60°                    |



| Order No. | Tool holder | Clamping range mm | Torque max. | n1/n2 (max.) (r.p.m.) | Gear Ratio | Coolant  | X mm | L mm | B mm | B1 mm | S mm | T mm |
|-----------|-------------|-------------------|-------------|-----------------------|------------|----------|------|------|------|-------|------|------|
| 103505    | ER 32       | 1,0-20            | 80 Nm       | 6.500 / 6.500         | i = 1:1    | external | -    | 75,5 | 87   | 38    | 101  | 75   |
| 103509    | ER 32       | 1,0-20            | 80 Nm       | 6.500 / 6.500         | i = 1:1    | internal | -    | 75,5 | 87   | 38    | 101  | 75   |
| 103521    | mi 50       |                   | 80 Nm       | 6.500 / 6.500         | i = 1:1    | internal | -    | 75,5 | 87   | 38    | 101  | 75   |
|           |             |                   |             |                       |            |          |      |      |      |       |      |      |
|           |             |                   |             |                       |            |          |      |      |      |       |      |      |
|           |             |                   |             |                       |            |          |      |      |      |       |      |      |

# Angle Unit

|  |   |
|--|---|
| for Manufacturer   |   |
| <b>LOKUMA</b>  |   |
| for Machine type   |   |
| <b>LB 400-M</b><br><b>LU 400-M (Only for Upper Turret)</b> |   |
| Dimensions   |   |
| Revolver type  | Disc-type Turret  |
| Shank  | VDI 40  |
| Drive  | Layer gear; single level  |
| Graduation   | 30 / 60°  |
| Note   | no reversion of rotation =<br>(drive side direction =<br>output side direction) |



| Order No. | Tool holder | Clamping range mm | Torque max. | n1/n2 (max.) (r.p.m.) | Gear Ratio | Coolant  | L mm | L1 mm | L2 mm | L3 mm | L4 mm | S mm | T mm |
|-----------|-------------|-------------------|-------------|-----------------------|------------|----------|------|-------|-------|-------|-------|------|------|
| 103542    | ER 32       | 1,0-20            | 50 Nm       | 6.500 / 6.500         | i = 1:1    | external | 109  | 70    | 39    | 66    | 70    | 101  | 80   |
| 103492    | ER 32       | 1,0-20            | 50 Nm       | 6.500 / 6.500         | i = 1:1    | internal | 109  | 70    | 39    | 66    | 70    | 101  | 80   |
| 103538    | mi 50       |                   | 50 Nm       | 6.500 / 6.500         | i = 1:1    | internal | 109  | 70    | 39    | 66    | 85    | 101  | 80   |
|           |             |                   |             |                       |            |          |      |       |       |       |       |      |      |
|           |             |                   |             |                       |            |          |      |       |       |       |       |      |      |
|           |             |                   |             |                       |            |          |      |       |       |       |       |      |      |